



PRINTING BLANKET


MANUFACTURER

GLOBAL SUPPLIER



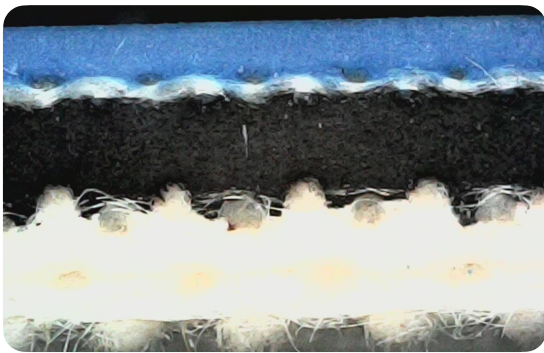
 Shanghai Ningsiwei Printing Equipment Co.,Ltd
 No.818 Liuxiang Road, Jiading District, Shanghai, China
 Factory: Guangde Yupeng Technology Co.,Ltd
 shnsw@ningsiwei.com

 <https://shnsw.en.alibaba.com>

 +86 021 3387 2611



Newmen MZ-310



Application:

Sheet-fed printing; Strong Universality;
Appropriate to dot and word printing.

- Strong versatility, applicable to different types of paper.
- Excellent dot reproduction performance, flat on the ground, full version of high density.
- A wide range of optimum printing pressures.
- Uniform thickness to ensure stable printing quality.
- Fine surface grinding, good ink transfer and off-paper, good cleaning effect.

Technical Date:

Color	Blue
Layer	3ply
Thickness(mm)	1.70/1.95±0.02mm
Surface Finish	Micro-ground and Polished
Roughness(Ra)	0.7-1.1µm
Compression Ratio	0.30mm (at 200N/cm ² pressure)
Hardness(Shore A)	75° - 79°
Elongation	≤1.0%
Maximum tension (DIN 16621)	>3800N