




PRINTING BLANKET


MANUFACTURER

GLOBAL SUPPLIER



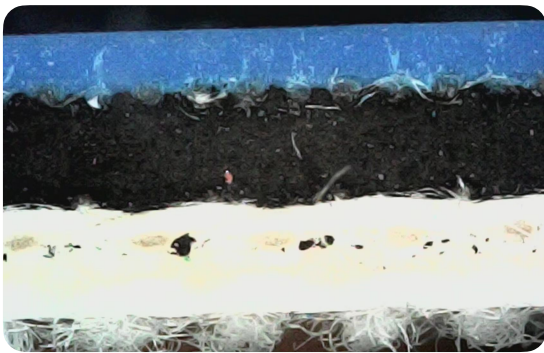
 Shanghai Ningsiwei Printing Equipment Co.,Ltd
 No.818 Liuxiang Road, Jiading District, Shanghai, China
 Factory: Guangde Yupeng Technology Co.,Ltd
 shnsw@ningsiwei.com

 <https://shnsw.en.alibaba.com>

 +86 021 3387 2611



Newmen 7200E



Application:

Sheet-fed printing;

Adopting new type compressible layer and surface with medium performance and good durability.

- Suitable for different kinds of paper.
- Good dot reproduction, smooth surface.
- High dot density.
- Wide range of optimum printing pressure.
- Very good smash resistance.
- Grounded and buffered quick release surface.
- Easy washing and cleaning.

Technical Date:

Color	Blue
Layer	3ply
Thickness(mm)	1.70/1.95±0.02mm
Surface Finish	Micro-ground and Polished
Roughness(Ra)	0.7-1.1µm
Compression Ratio	0.30mm (at 200N/cm ² pressure)
Hardness(Shore A)	75° - 79°
Elongation	≤1.0%
Maximum tension (DIN 16621)	>3800N